



EDUCATION FOR LIFE SCRUTINY COMMITTEE - 22ND SEPTEMBER 2015

**SUBJECT: PUPIL ATTAINMENT AT FOUNDATION PHASE, KEY STAGE 2 AND
KEY STAGE 3 2015**

REPORT BY: EDWARD PRYCE, CHALLENGE ADVISER (EAS)

1. PURPOSE OF REPORT

- 1.1 The report is to inform members of pupils' attainment in teacher assessment at Foundation Phase, Key Stage 2 and Key Stage 3.

2. SUMMARY

- 2.1 All schools are subject to rigorous reporting and monitoring of standards each year, with the principal focus in key stages 2 and 3 being on English/Welsh first language, mathematics and science, and the percentage of pupils achieving the expected level in all three core subjects (core subject indicator – CSI).
- 2.2 In the Foundation Phase (formerly key stage 1), following the implementation of a revised curriculum, schools reported for the first time in 2012 on the performance of 7 year olds in language, literacy and communication (English or Welsh language) (LLC), mathematical development (MD), and personal and social development, wellbeing and cultural development (PSDWCD). The foundation phase indicator (FPI) measures the percentage achieving the expected outcome in all three areas of learning.
- 2.3 Whilst assessment of LLC and MD is broadly comparable to performance in English/Welsh and mathematics at KS2 and KS3, PSDWCD is not the same as science. Instead it provides a holistic assessment of pupils' wellbeing and the extent to which they are able to inter-relate appropriately with those around them. It also reflects a growing awareness of culture and diversity and of the environment in which they live. As such, it is an important measure of their overall 'readiness' for learning. Achievement in each of LLC, MD and PSDWCD is measured in relation to one of six 'outcome' descriptors.

Expected levels of achievement at the end of foundation phase, key stage 2 and key stage 3:

- 2.4 The 'average' pupil is expected to achieve outcome 5 by the end of the foundation phase (formerly national curriculum level 2), with more able pupils achieving outcome 6 (formerly level 3). At the end of key stages 2 and 3, the 'average' pupil is expected to achieve level 4 and above and level 5 and above respectively and more able pupils are expected to achieve level 5 and 6 respectively.
- 2.5 Please note that for future years the Minister for Education and Skills' statement of 13 May 2015, points to changes to expectations. The expected levels at the end of each phase of education have not yet been specifically defined, by the Welsh Government.

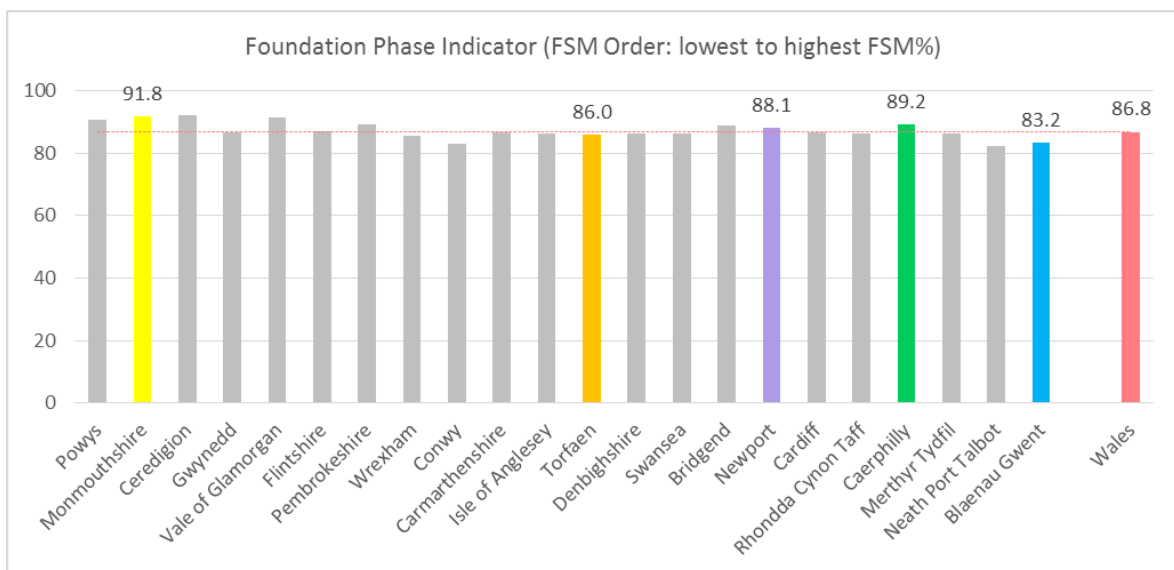
3. LINKS TO STRATEGY

- Children and Families (Wales) Measure 2010
- Child Poverty Strategy for Wales
- Child Poverty Strategy 2014 – 2017 (UK)
- Corporate Improvement Plan
- The Learning Theme of Caerphilly Delivers
- The LSB Single Integrated Plan

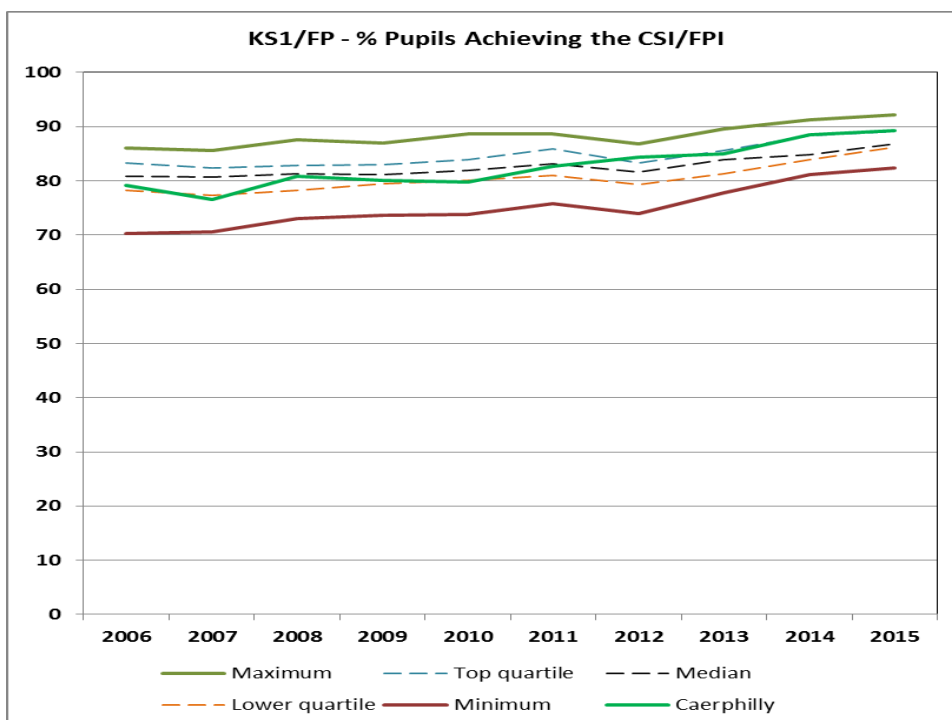
4. THE REPORT

4.1 Foundation Phase

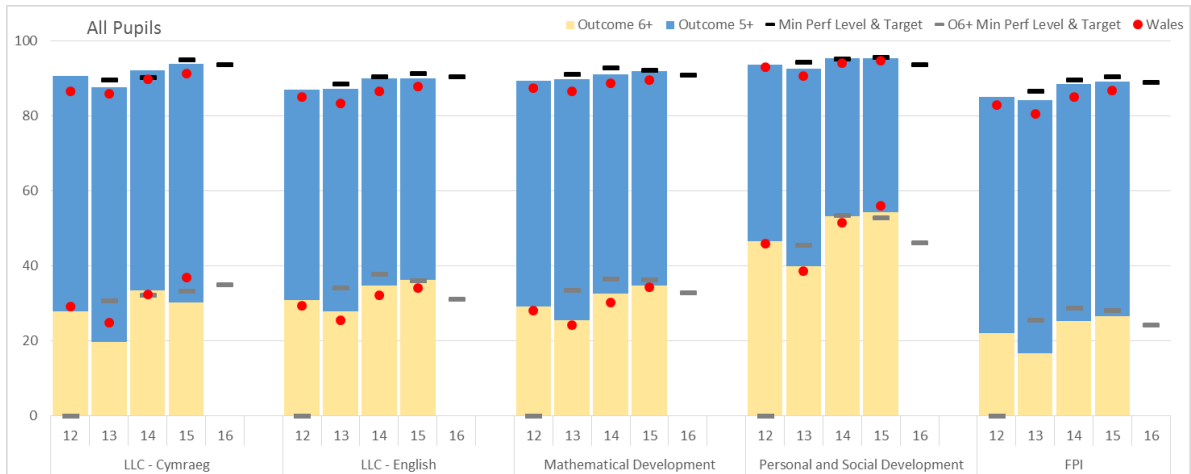
4.1.1 Performance in the foundation phase continues to improve, with 89.2% pupils achieving the foundation phase indicator (FPI) in 2015, an increase from 88.5% in 2014. Caerphilly currently ranks 6th in Wales for the FPI when compared with other local authorities, which is significantly above the LA's FSM ranking (19th, 2014 PLASC data).



10 Year Performance Summary – FPI / CSI (before 2012)



4.1.2 There have been improvements at both the expected level (outcome 5+) and at the higher level (outcome 6) in all indicators, apart from Personal and Social Development at outcome 5+, which remained the same and a decline in LLC-Cymraeg at outcome 6)



4.1.3 Percentage of pupils achieving Outcome 5+:

	FPI	LLC English	LLC Welsh	Mathematical Development	PSDWCD
Caerphilly 2015	89.2 ↑	90.1 ↑	93.8 ↑	91.9 ↑	95.4 →
Caerphilly 2015 Target	90.5	91.4	95.0	92.2	95.8
Caerphilly 2014	88.5	90.0	92.3	91.1	95.4
Wales 2014	86.8	88.0	91.3	89.7	94.8

4.1.4 Percentage of pupils achieving Outcome 6:

	LLC English	LLC Welsh	Mathematical Development	PSDWCD
Caerphilly 2015	30.3 ↑	30.3 ↓	34.7 ↑	54.4 ↑
Caerphilly 2015 Target	36.1	33.3	36.2	52.9
Caerphilly 2014	28.3	33.5	32.5	53.3
Wales 2014	34.2	36.9	34.3	56.0

4.1.5 Performance in the Foundation Phase Indicator has improved by 1.3 percentage points and is ranked 6th in Wales.

4.1.6 Performance in LLC English has improved by 0.1 percentage points at outcome 5+, and by 2.0 at outcome 6. Performance is ranked 8th in Wales at outcome 5+.

4.1.7 Performance in LLC Welsh has improved by 1.5 percentage points at outcome 5+, but declined by 3.2 at outcome 6. Performance is ranked 6th in Wales at outcome 5+.

4.1.8 Performance in mathematical development has improved by 0.8 percentage points at outcome 5+ and by 2.3 at outcome 6. Performance is ranked 4th in Wales at outcome 5+.

4.1.9 Performance in PSDWCD has remained the same at outcome 5+ and improved by 1.1 at outcome 6. Performance is ranked 12th in Wales at outcome 5+.

4.1.10 Performance is within 0.3% - 1.5% below the schools' aggregate targets for each area of learning. Schools are expected to set realistic but challenging targets.

4.1.11 Gender differences at outcome 5+ (boys' performance – girls' performance):

	FPI		LLC English		LLC Welsh		Mathematical Development		PSDWCD	
	2014	2015	2014	2015	2014	2015	2014	2015	2014	2015
Caerphilly	-7.8	-6.6	-7.6	-6.3	-7.3	-2.8	-4.9	-4.9	-4.3	-5.2
Wales	-8.5	-7.8	-8.3	-7.6	-8.3	-7.6	-7.9	-6.7	-5.3	-4.8

4.1.12 At outcome 5+ gender differences have reduced LLC-English and LLC Welsh, remained the same for mathematical development, and remain less than the Wales average for each area of learning. For PSDWCD gender differences increased to be slightly above the Wales' average.

4.1.13 Gender differences at outcome 6 (boys' performance – girls' performance):

	LLC English		LLC Welsh		Mathematical Development		PSDWCD	
	2014	2015	2014	2015	2014	2015	2014	2015
Caerphilly	-10.8	-11.0	-9.0	-15.4	-1.3	-1.5	-22.4	-20.7
Wales	-12.1		12.3		0.9		-18.1	

4.1.14 At outcome 6+ gender differences have increased slightly for LLC-English and mathematical development, increased for LLC Welsh, but reduced for PSDWCD. National gender differences for 2015 at outcome 6+ are not yet available.

4.1.15 Wales rankings:

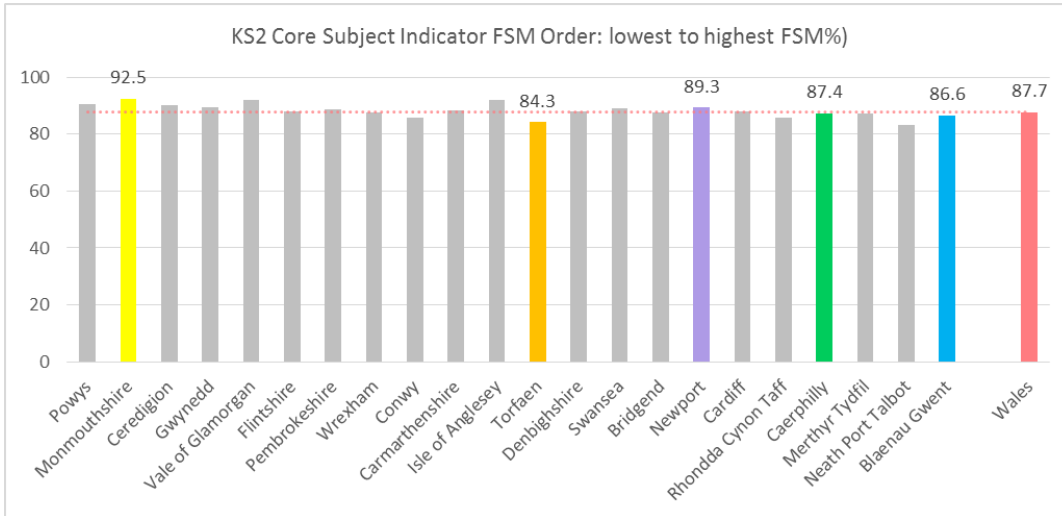
When compared with other LAs in Wales, performance in Caerphilly is significantly higher than could be expected and above the national figures for all areas of learning.

	FPI	LLC English	LLC Welsh	Mathematical Development	PSDWCD
2015	6	8	6	4	12
2014	6	5	4	6	8
2013	7	9	3	8	=12

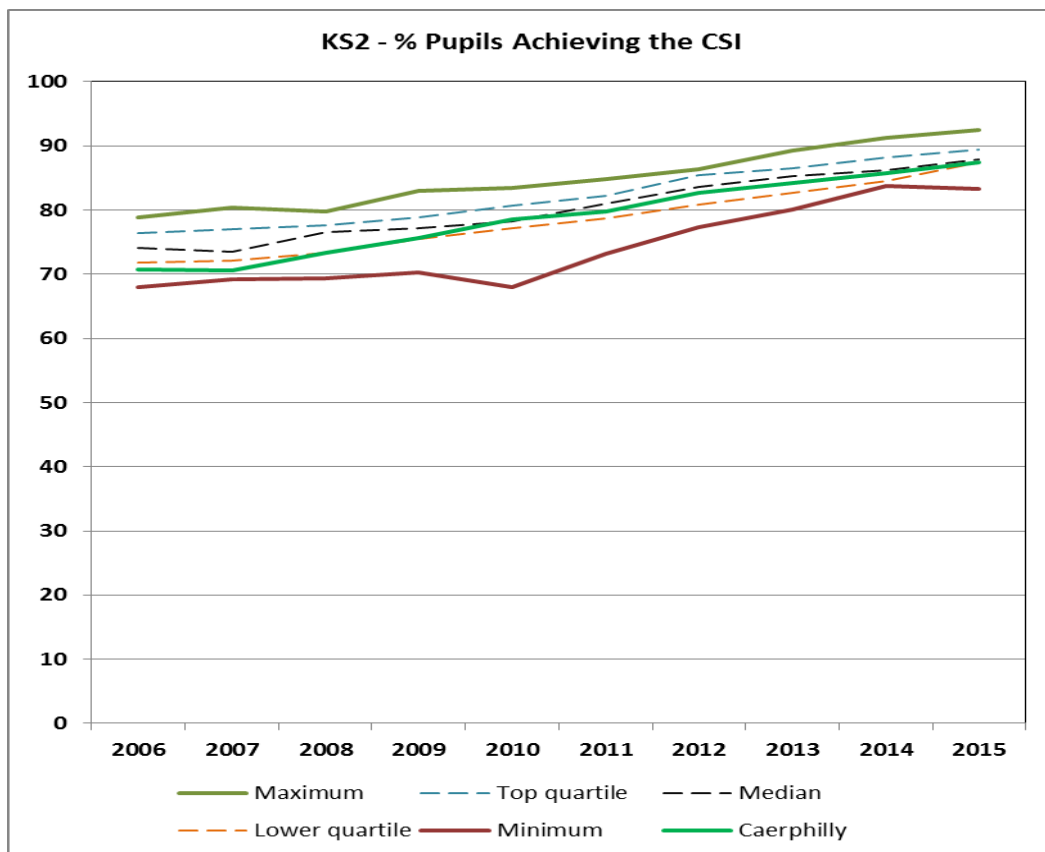
FPI		LLC - English		LLC - Welsh		Math. Dev.		PSD	
Ceredigion	92.2	Ceredigion	94.0	The Vale of Glamorgan	96.2	Ceredigion	94.5	Ceredigion	98.1
Monmouthshire	91.8	Monmouthshire	93.3	Newport	95.9	The Vale of Glamorgan	93.9	Monmouthshire	97.6
The Vale of Glamorg	91.5	The Vale of Glamorg	92.7	Bridgend	95.4	Monmouthshire	93.9	The Vale of Glamorgan	96.9
Powys	90.6	Powys	91.5	Rhondda Cynon Taf	94.4	Powys	92.7	Pembrokeshire	96.1
Pembrokeshire	89.2	Pembrokeshire	91.1	Powys	94.1	Caerphilly	91.9	Powys	96.0
Caerphilly	89.2	Bridgend	90.5	Ceredigion	93.8	Pembrokeshire	91.7	Isle of Anglesey	95.8
Bridgend	88.8	Newport	90.2	Caerphilly	93.8	Bridgend	91.5	Denbighshire	95.7
Newport	88.1	Caerphilly	90.1	Cardiff	92.8	South East Wales	90.7	Flintshire	95.6
South East Wales	88.0	South East Wales	90.0	Neath Port Talbot	92.6	Gwynedd	90.4	Newport	95.6
Flintshire	87.0	Flintshire	89.0	Swansea	92.2	Flintshire	90.2	South East Wales	95.6
Gwynedd	86.8	Torfaen	88.7	Merthyr Tydfil	92.1	Newport	90.2	Gwynedd	95.5
Cardmarthenshire	86.8	Wales	88.0	Denbighshire	91.9	Torfaen	90.1	Caerphilly	95.4
Wales	86.8	Cardiff	87.9	South East Wales	91.6	Cardmarthenshire	89.8	Cardmarthenshire	95.2
Cardiff	86.7	Denbighshire	87.6	Cardmarthenshire	91.4	Wales	89.7	Swansea	94.9
Denbighshire	86.4	Wrexham	87.2	Torfaen	91.3	Isle of Anglesey	89.4	Bridgend	94.9
Rhondda Cynon Taf	86.3	Merthyr Tydfil	87.2	Wales	91.3	Denbighshire	89.4	Blaenau Gwent	94.8
Isle of Anglesey	86.2	Swansea	87.0	Flintshire	91.2	Cardiff	89.4	Wales	94.8
Swansea	86.2	Blaenau Gwent	87.0	Monmouthshire	90.9	Rhondda Cynon Taf	89.1	Conwy	94.7
Merthyr Tydfil	86.2	Rhondda Cynon Taf	86.8	Pembrokeshire	90.1	Swansea	88.0	Torfaen	94.7
Torfaen	86.0	Isle of Anglesey	86.1	Isle of Anglesey	89.8	Wrexham	88.7	Rhondda Cynon Taf	94.3
Wrexham	85.5	Conwy	86.1	Wrexham	89.2	Merthyr Tydfil	88.1	Merthyr Tydfil	94.3
Blaenau Gwent	83.2	Cardmarthenshire	83.4	Gwynedd	88.4	Conwy	87.9	Cardiff	94.0
Conwy	82.9	Neath Port Talbot	82.8	Conwy	84.6	Blaenau Gwent	86.0	Wrexham	93.9
Neath Port Talbot	82.3	Gwynedd	*	Blaenau Gwent	67.3	Neath Port Talbot	85.2	Neath Port Talbot	92.7

4.2 Key Stage 2

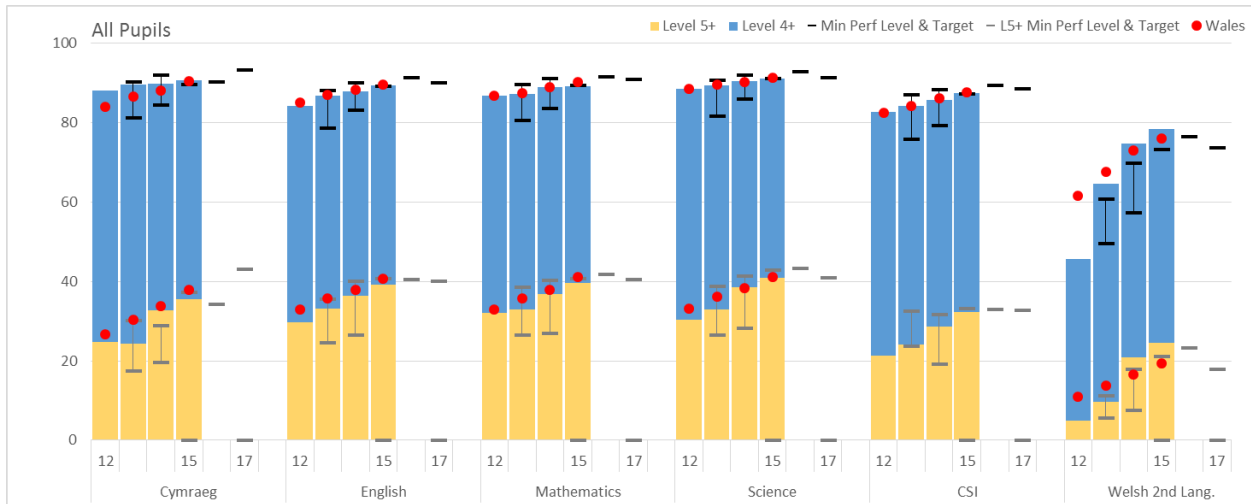
4.2.1 Performance continues to improve, with 87.4% pupils achieving the core subject indicator (CSI) in 2015, an increase from 85.8% in 2014. Caerphilly is ranked =16th in Wales, which is higher than could be expected given the LA's FSM ranking.



4.2.2 10 Year Performance Summary – Key Stage 2 CSI



4.2.3 Performance at the expected level 4+ has improved and significant gains have been made at the higher level 5+, over the last 2 years. Performance is slightly below national figures in all subjects except Welsh (first language), which is slightly above.



4.2.4 Percentage of pupils achieving level 4+:

	CSI	English	Welsh (First Language)	Mathematics	Science
Caerphilly 2015	87.4 ↑	89.3 ↑	90.7 ↑	89.3 ↑	91.0 ↑
Caerphilly 2015 Target	87.2	89.2	89.5	89.3	91.2
Caerphilly 2014	85.8	88.0	89.9	89.0	90.4
Wales 2014	87.7	89.6	90.5	90.2	91.4

4.2.5 Percentage of pupils achieving level 5+:

	English	Welsh (First Language)	Mathematics	Science
Caerphilly 2015	39.2 ↑	35.6 ↑	39.6 ↑	41.0 ↑
Caerphilly 2015 Target	40.8	37.2	40.7	42.9
Caerphilly 2014	36.5	32.8	36.8	38.5
Wales 2014	40.8	38.0	41.2	41.1

- 4.2.6 Performance in the CSI has improved by 2.6 percentage points and is ranked 16th in Wales.
- 4.2.7 Performance in English at the expected level 4+ has improved by 1.3 percentage points and is ranked =15th in Wales. Performance at the higher level 5+ improved by 2.7 percentage points.
- 4.2.8 Performance in Welsh (first language) at the expected level 4+ has improved by 1.8 percentage points and is ranked 10th in Wales. Performance in Welsh (first language) at the higher level 5+ has improved by 2.8 percentage points.
- 4.2.9 Performance in mathematics at the expected level 4+ has improved by 0.3 percentage points and is ranked 18th in Wales. Performance in mathematics at the higher level 5+ improved by 2.8 percentage points.
- 4.2.10 Performance in science at the expected level 4+ has improved by 0.6 percentage points and is ranked 15th in Wales. Performance in science at the higher level 5+ has improved by 2.5 percentage points.
- 4.2.11 Performance at the expected level 4+ for all indicators is within +/- 0.5% of the school aggregate targets.

4.2.12 Gender differences at level 4+ (boys' performance – girls' performance):

	CSI		English		Welsh (First Language)		Mathematics		Science	
	2014	2015	2014	2015	2014	2015	2014	2015	2014	2015
Caerphilly	-6.0	-9.4	-6.3	-9.2	-7.2	-2.6	-3.8	-8.3	-5.3	-7.4
Wales	-6.3	-5.8	-7.0	-6.2	-8.5	-6.0	-3.8	-3.7	-4.2	-3.7

4.2.13 At level 4+ gender differences have increased in each subject area, apart from Welsh (first language). Gender differences for the CSI, English, mathematics and science are now slightly wider than the national gender differences.

4.2.14 Gender differences at level 5+ (boys' performance – girls' performance):

	English		Welsh (First Language)		Mathematics		Science	
	2014	2015	2014	2015	2014	2015	2014	2015
Caerphilly	-11.2	-15.3	-14.0	-14.8	-1.8	-4.7	-6.7	-10.2
Wales	-11.7		-13.3		-8.5		-3.0	

4.2.15 At level 5+ gender differences have also increased for each subject. National gender differences for 2015 at level 5+ are not yet available.

4.2.16 Wales rankings:

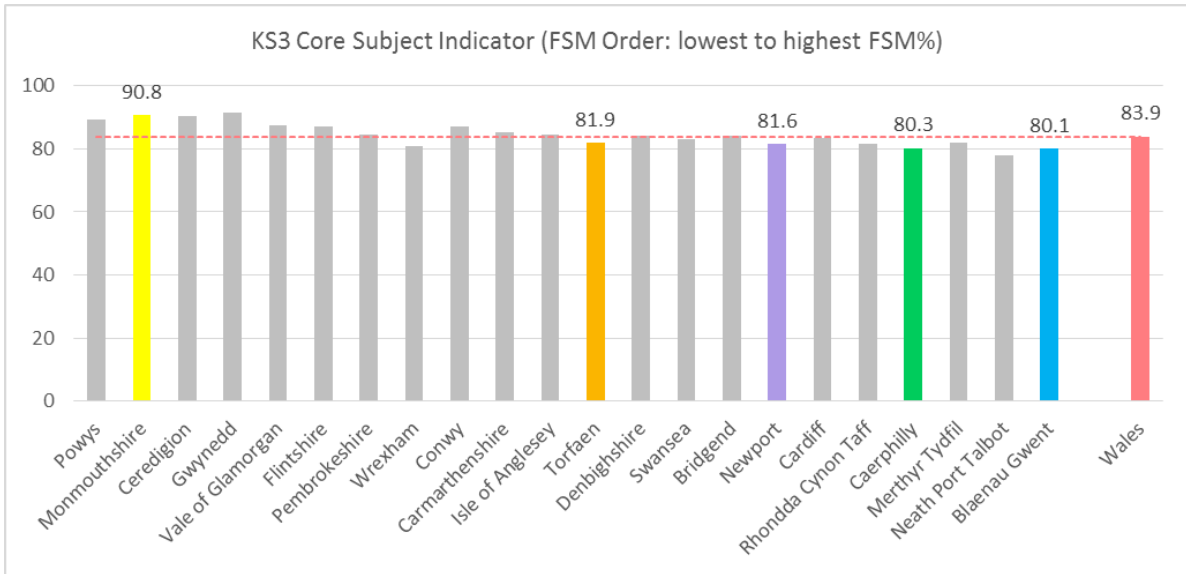
4.2.17 Improvements in performance have increased the LA's rankings against other LAs in Wales in mathematics and science. The LA's rankings have declined by one place for the CSI and Welsh (first language) due to a greater rate of improvement in other LAs.

	CSI	English	Welsh (first language)	Mathematics	Science
2015	=15 →	=15 →	10 →	18 ↓	15 ↓
2014	15 ↓	15	10 ↓	11 ↑	13 ↑
2013	14	15	9	13	15

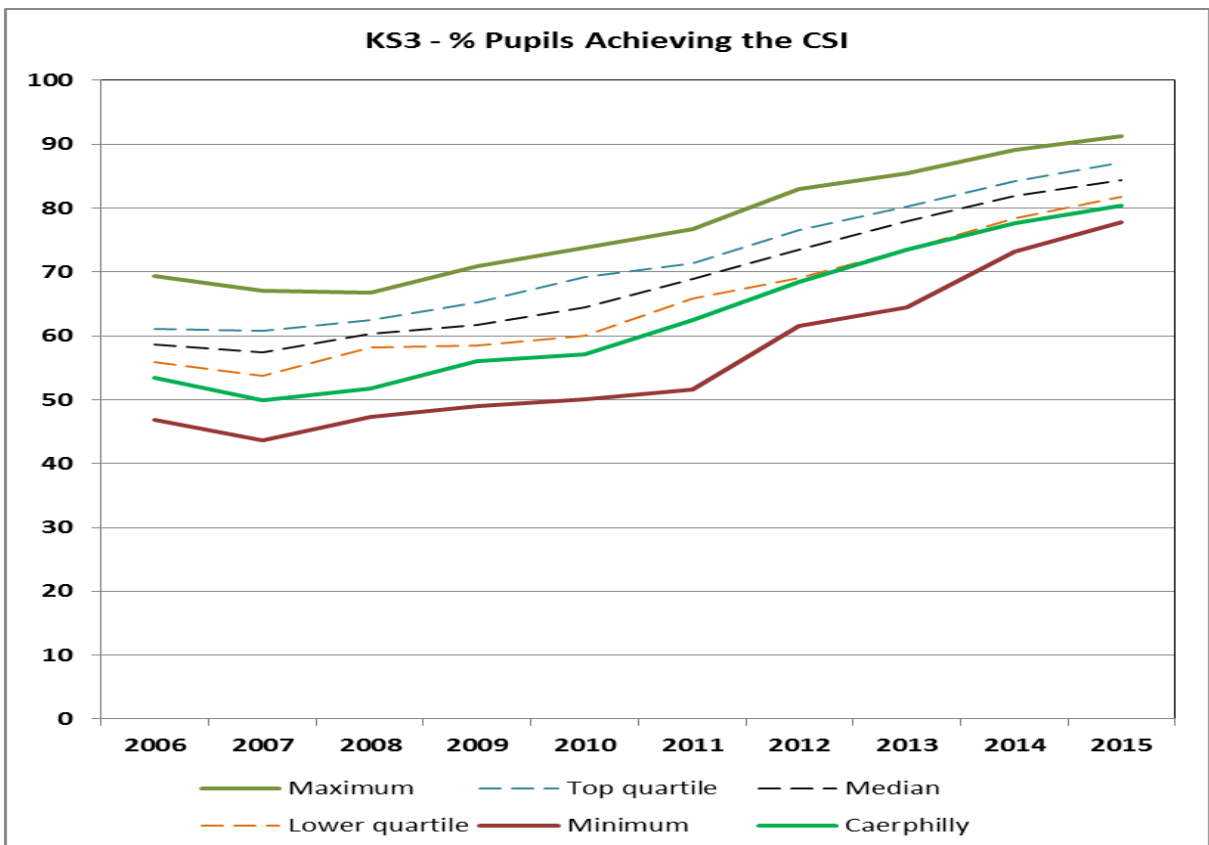
CSI		English		Welsh 1st Lang.		Mathematics		Science	
Monmouthshire	92.5	The Vale of Glamorgan	93.5	Torfaen	97.4	Monmouthshire	94.7	Monmouthshire	95.2
The Vale of Glamorgan	92.1	Monmouthshire	93.4	Powys	96.6	The Vale of Glamorgan	93.7	The Vale of Glamorgan	95.1
Isle of Anglesey	91.8	Isle of Anglesey	93.2	The Vale of Glamorgan	95.9	Isle of Anglesey	93.5	Isle of Anglesey	93.9
Powys	90.4	Powys	91.9	Bridgend	94.7	Powys	92.5	Powys	93.5
Ceredigion	90.3	Newport	91.5	Newport	94.1	Ceredigion	92.2	Newport	93.4
Gwynedd	89.5	Ceredigion	91.1	Cardiff	93.7	Gwynedd	91.3	Gwynedd	93.2
Newport	89.3	Swansea	90.9	Merthyr Tydfil	93.5	Swansea	91.3	Pembrokeshire	92.9
Swansea	89.2	Pembrokeshire	90.5	Swansea	92.9	Newport	91.2	Ceredigion	92.7
Pembrokeshire	88.6	Flintshire	90.1	Rhondda Cynon Taff	92.3	Flintshire	90.9	Swansea	92.6
Cardiff	88.2	Gwynedd	90.0	Caerphilly	90.7	Pembrokeshire	90.8	Flintshire	92.1
South East Wales	88.1	Cardiff	90.0	South East Wales	90.6	Wrexham	90.4	Cardiff	91.9
Denbighshire	87.9	South East Wales	90.0	Denbighshire	90.6	Cardiff	90.4	Wrexham	91.8
Flintshire	87.9	Cardiff	89.9	Wales	90.5	South East Wales	90.2	South East Wales	91.4
Cardiff	87.8	Wrexham	89.8	Gwynedd	90.4	Denbighshire	90.2	Wales	91.4
Wrexham	87.7	Denbighshire	89.7	Neath Port Talbot	90.1	Wales	90.2	Denbighshire	91.2
Wales	87.7	Wales	89.6	Isle of Anglesey	89.7	Merthyr Tydfil	90.1	Bridgend	91.1
Bridgend	87.6	Bridgend	89.5	Wrexham	88.9	Bridgend	90.0	Caerphilly	91.0
Merthyr Tydfil	87.4	Merthyr Tydfil	89.3	Cardiff	88.6	Cardiff	89.9	Conwy	90.9
Caerphilly	87.4	Caerphilly	89.3	Ceredigion	88.3	Conwy	89.5	Cardiff	90.8
Blaenau Gwent	86.6	Conwy	88.5	Conwy	87.4	Caerphilly	89.3	Merthyr Tydfil	90.4
Conwy	85.8	Rhondda Cynon Taff	88.0	Flintshire	86.4	Blaenau Gwent	89.0	Torfaen	90.4
Rhondda Cynon Taff	85.8	Blaenau Gwent	87.9	Monmouthshire	85.7	Rhondda Cynon Taff	88.9	Rhondda Cynon Taff	89.4
Torfaen	84.3	Torfaen	87.1	Pembrokeshire	85.4	Torfaen	87.3	Blaenau Gwent	89.4
Neath Port Talbot	83.3	Neath Port Talbot	85.3	Blaenau Gwent	69.2	Neath Port Talbot	85.8	Neath Port Talbot	87.6

4.3 Key Stage 3

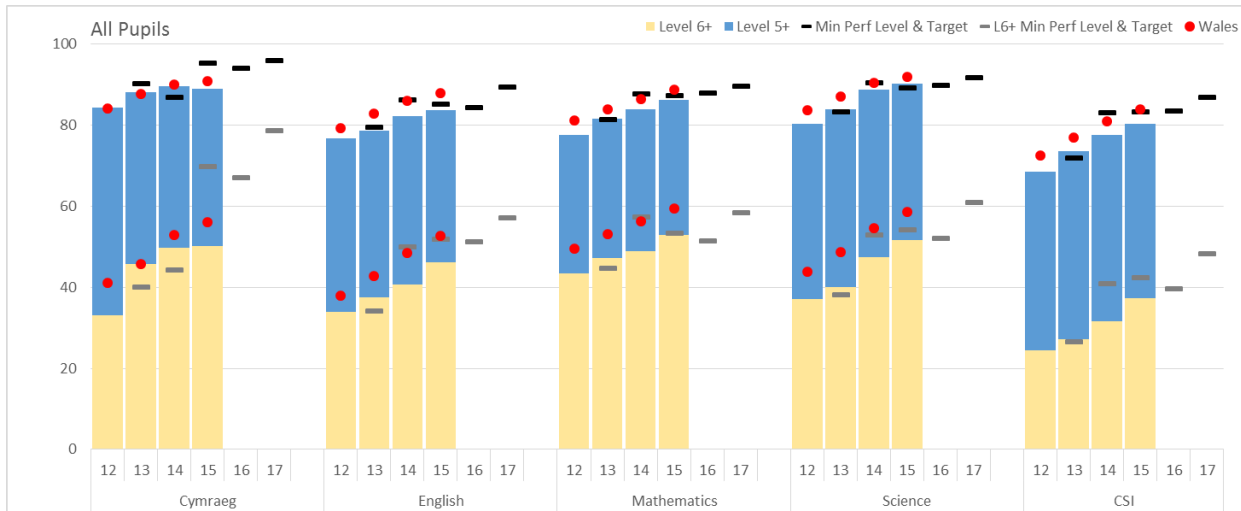
4.3.1 Performance continues to improve, with 80.3% pupils achieving the core subject indicator (CSI), a significant increase from 77.6% in 2014. There was also a significant increase in performance across Wales and Caerphilly is now ranked 20th in Wales.



4.3.2 10 Year Performance Summary – Key Stage 3 CSI



4.3.3 Performance has improved across all indicators at the expected level 5+ and at level 6+, apart from Welsh First Language at level 5+.



4.3.4 Percentage of pupils achieving level 5+

	CSI	English	Welsh (First Language)	Mathematics	Science
Caerphilly 2015	80.3 ↑	83.7 ↑	88.9 ↓	86.1 ↑	90.2 ↑
Caerphilly 2015 Target	83.3	85.2	95.3	87.3	89.2
Caerphilly 2014	77.6	82.2	89.5	83.9	88.8
Wales 2014	83.9	87.9	90.9	88.7	91.8

4.3.5 Percentage of pupils achieving level 6+

	English	Maths	Science
Caerphilly 2015	46.2 ↑	52.9 ↑	51.7 ↑
Caerphilly 2015 Target	51.9	53.3	54.2
Caerphilly 2014	40.8	48.8	47.4
Wales 2014	52.6	59.5	58.5

4.3.6 Percentage of pupils achieving level 7+

	English	Maths	Science
Caerphilly 2015	13.0 ↑	20.4 ↑	14.9 ↑
Caerphilly 2014	10.7	18.1	12.9
Wales 2014	16.6	26.3	20.7

4.3.7 Performance in the CSI has improved by 2.7 percentage points and is ranked 20th in Wales.

4.3.8 Performance in English at the expected level 5+ has improved by 1.5 percentage points and is ranked 20th in Wales. Performance in English at the higher level 6+ has improved by 5.4 percentage points.

4.3.9 Performance in Welsh (first language) at the expected level 5+ has declined by 0.6 percentage points compared to 2014.

4.3.10 Performance in mathematics at the expected level 5+ has improved by 2.2 percentage points. Performance in mathematics at the higher level 6+ has improved by 4.1 percentage points.

4.3.11 Performance in science at the expected level 5+ has improved by 1.4 percentage points. Performance in science at the higher level 6+ has improved by 4.3 percentage points.

4.3.12 Performance at the expected Level 5+ was between 3-6% below school target, apart from science, where it was 1% above target.

4.3.13 **Gender differences at level 5+ (boys' performance – girls' performance):**

	CSI		English		Mathematics		Science	
	2014	2015	2014	2015	2014	2015	2014	2015
Caerphilly	-11.9	-7.0	-11.2	-8.6	-7.3	-2.1	-7.9	-3.2
Wales	-8.7	-7.4	-10.3	-8.2	-4.1	-3.4	-5.3	-4.5

Gender differences have reduced in all indicators to now be approximately in line with the Wales average.

4.3.14 **Gender differences at level 6+ (boys' performance – girls' performance):**

	English		Mathematics		Science	
	2014	2015	2014	2015	2014	2015
Caerphilly	-16.1	-17.8	-5.1	-6.5	-9.6	-11.2
Wales	-17.3		-5.0		-10.3	

Gender differences have increased slightly, compared with 2014. National gender differences for 2015 at level 6+ are not yet available.

4.3.15 **Gender differences at level 7+ (boys' performance – girls' performance):**

	English	Mathematics		Science		
	2014	2015	2014	2015	2014	2015
Caerphilly	-8.2	-10.6	-1.2	-1.4	-2.6	-4.5
Wales	-8.5		-1.6		4.6	

Gender differences have increased slightly, compared with 2014. National gender differences for 2015 at level 7+ are not yet available.

4.3.16 **Wales rankings:**

4.3.17 Whilst improvements have been made in all subjects and indicators, due to a significant increase in performance across Wales, Caerphilly's ranking has fallen to 20th for the CSI and 22nd for English. The LA rankings have remained the same in mathematics, but declined 2 places for science.

	CSI	English	Welsh (first language)	Mathematics	Science
2015	20 ↓	22 ↓	13/18 ↓	19 →	19 ↓
2014	18 →	20 →	11/18 ↓	19 ↓	17 ↑
2013	18	20	10/18	17	19

CSI		English		Welsh 1st Lang.		Mathematics		Science	
Gwynedd	91.3	Monmouthshire	93.7	Powys	95.7	Gwynedd	93.4	Ceredigion	96.1
Monmouthshire	90.8	Ceredigion	93.4	Wrexham	93.9	Ceredigion	92.8	Gwynedd	95.9
Ceredigion	90.5	The Vale of Glamorg	92.1	Isle of Anglesey	93.2	Flintshire	92.0	Conwy	94.9
Powys	89.3	Powys	91.9	Swansea	93.2	Monmouthshire	92.0	Monmouthshire	94.9
The Vale of Glamorg	87.4	Conwy	91.4	Gwynedd	93.0	Powys	91.8	Powys	94.6
Conwy	87.2	Flintshire	91.4	Cardiff	92.8	The Vale of Glamorgan	91.4	Flintshire	94.3
Flintshire	87.1	Gwynedd	91.3	Denbighshire	92.5	Conwy	91.1	The Vale of Glamorgan	94.1
Cardarthenshire	85.1	Pembrokeshire	88.6	Rhondda Cynon Taff	92.5	Cardarthenshire	90.4	Denbighshire	93.1
Isle of Anglesey	84.5	Bridgend	88.6	The Vale of Glamorgan	91.9	Denbighshire	89.7	Isle of Anglesey	92.6
Pembrokeshire	84.5	Cardarthenshire	88.4	Conwy	91.5	Cardiff	89.3	Cardarthenshire	91.9
Denbighshire	84.3	Isle of Anglesey	87.9	Pembrokeshire	90.9	Isle of Anglesey	88.9	Torfaen	91.8
Bridgend	84.3	Wales	87.9	Wales	90.9	Wales	88.7	Wales	91.8
Wales	83.9	Denbighshire	87.8	Ceredigion	90.8	Pembrokeshire	88.6	Bridgend	91.7
Cardiff	83.4	Swansea	87.6	Caerphilly	88.9	Swansea	87.9	Cardiff	91.5
Swansea	83.2	Merthyr Tydfil	87.2	South East Wales	88.2	Bridgend	87.8	Pembrokeshire	91.2
South East Wales	82.2	Newport	87.2	Bridgend	87.3	Merthyr Tydfil	87.5	Newport	91.1
Merthyr Tydfil	81.9	Torfaen	86.9	Torfaen	87.0	Rhondda Cynon Taff	87.3	South East Wales	91.0
Torfaen	81.9	Cardiff	86.7	Cardarthenshire	86.5	South East Wales	87.0	Rhondda Cynon Taff	90.7
Rhondda Cynon Taff	81.6	South East Wales	86.5	Neath Port Talbot	85.0	Newport	86.7	Wrexham	90.6
Newport	81.6	Wrexham	86.1	Flintshire	80.0	Torfaen	86.5	Swansea	90.2
Wrexham	80.9	Rhondda Cynon Taff	86.0	Merthyr Tydfil	.	Caerphilly	86.1	Caerphilly	90.2
Caerphilly	80.3	Neath Port Talbot	84.2	Blaenau Gwent	.	Wrexham	85.9	Merthyr Tydfil	89.3
Blaenau Gwent	80.1	Blaenau Gwent	83.8	Monmouthshire	.	Blaenau Gwent	85.1	Neath Port Talbot	87.8
Neath Port Talbot	77.8	Caerphilly	83.7	Newport	.	Neath Port Talbot	83.4	Blaenau Gwent	87.7

5. EQUALITIES IMPLICATIONS

5.1 There is no specific equalities impact in relation to the content of this report. When performance information is discussed with schools as part of the monitoring, challenge, support and intervention programme, all Equalities and Welsh Language issues are taken into account, where relevant. Similarly the Local Authority self-evaluation considers all equalities issues, and data is also gathered on discriminatory bullying incidents each term as this can impact on attainment figures for pupils who fall under any of the protected characteristics.

6. FINANCIAL IMPLICATIONS

6.1 There are no financial implications.

7. PERSONNEL IMPLICATIONS

7.1 There are no personnel implications within this report.

8. CONSULTATIONS

8.1 The views of all consultees listed have been incorporated in this report.

9. RECOMMENDATIONS

9.1 Members are requested to note the content of this report.

10. REASONS FOR THE RECOMMENDATIONS

10.1 To keep Members informed of standards achieved by Caerphilly learners in end of foundation phase, key stage 2 and key stage 3 teacher assessment.

11. STATUTORY POWER

11.1 Children and Families Measure (Wales) 2010.

11.2 Local Government Measure 2009.

11.3 Education Act.

Author: Edward Pryce, Challenge Adviser (EAS)
Consultees: Christina Harrhy, Corporate Director, Education and Community Services
Cllr Rhiannon Passmore - Cabinet Member for Education and Lifelong Learning
Directorate Senior Management Team
Corporate Management Team
Councillor W. David – Chair of Education for Life Scrutiny Committee
Councillor J. Pritchard – Vice Chair Education for Life Scrutiny Committee
David Thomas, Senior Policy Officer (Equalities and Welsh Language)
HR Division
Finance Division